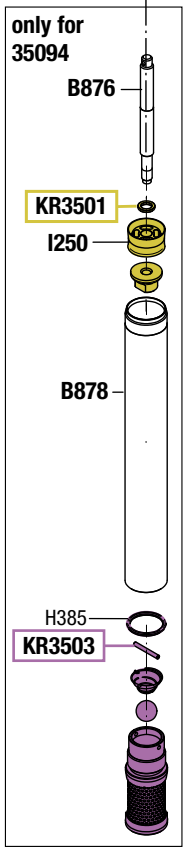
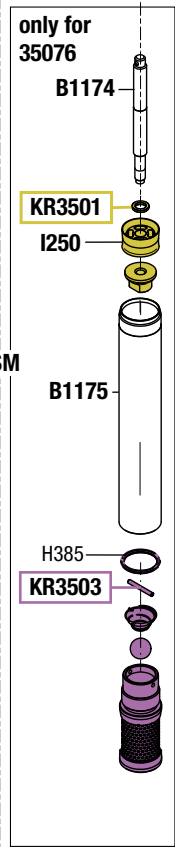
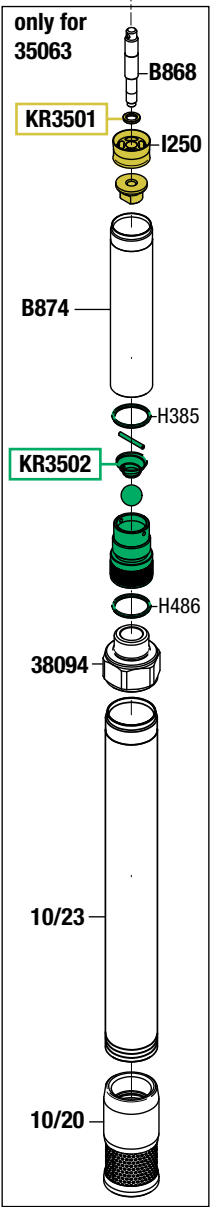
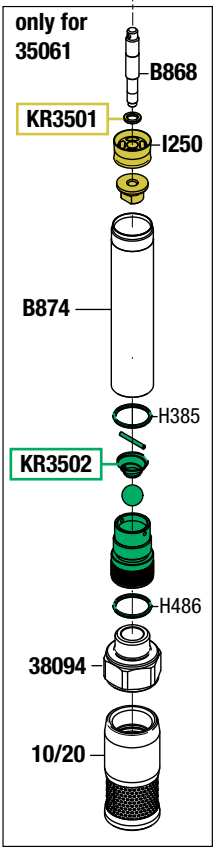
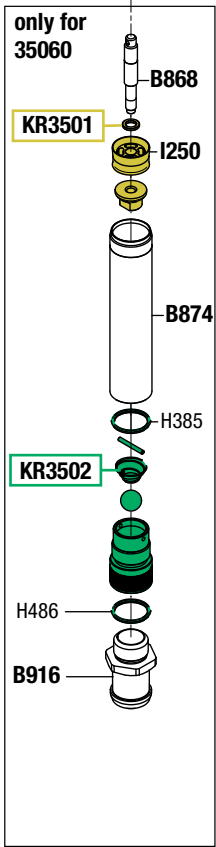
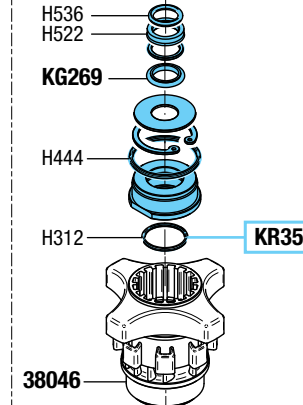
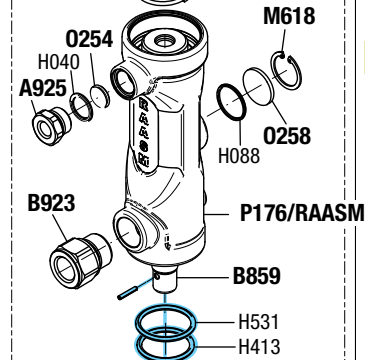
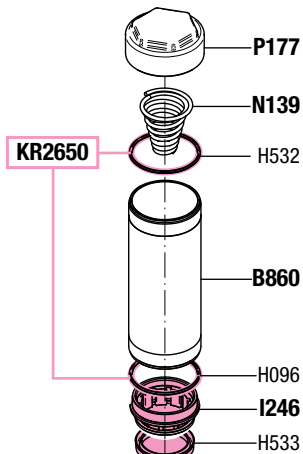
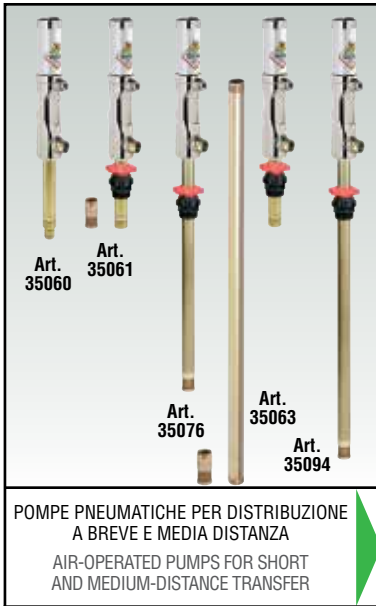




VISTA ESPLOSA - EXPLODED VIEW





## GUIDA RICAMBI - SPARE PARTS GUIDE

<b>KIT RICAMBI</b>		
OGNI KIT SOTTO RIPORTATO COMPRENDE I RICAMBI EVIDENZIATI CON LO STESSO COLORE E LE RELATIVE GUARNIZIONI. QUESTI RICAMBI NON SONO FORNIBILI SEPARATAMENTE TRANNE QUELLI CODIFICATI.		
<b>SPARE PARTS KITS</b>		
EACH KIT SHOWN WITH THE SAME COLOR INCLUDES ALSO THE GASKETS. THE SPARE PARTS INCLUDED IN THE KIT CAN'T BE SUPPLIED SEPARATELY EXCEPT THOSE SHOWN WITH A PROPER CODE.		
CODICE CODE	DESCRIZIONE DESCRIPTION	Q. TÀ QTY
KR2603	GRUPPO PISTONE MOTORE POMPANTE PUMPING MOTOR PISTON GROUP	1
KR2650	GR. TRAVASO ARIA SLIDE VALVE GROUP	1
KR3501	PISTONE POMPANTE PUMPING PISTON	1
KR3502	VALVOLA FONDO PESCANTE BOTTOM VALVE	1
KR3503	VALVOLA FONDO PESCANTE BOTTOM VALVE	1
KR3551	PACCO GUARNIZIONI GASKETS SET	1

<b>ELENCO RICAMBI FORNIBILI SINGOLARMENTE</b>		
<b>LIST OF SPARE PARTS WHICH CAN BE SUPPLIED SEPARATELY</b>		
CODICE CODE	DESCRIZIONE DESCRIPTION	Q. TÀ QTY
10/20	VALVOLA FONDO PESCANTE Art. 35061 BOTTOM VALVE Art. 35061	1
10/23	PROLUNGA PESCANTE 960 mm Art. 35063 SUCTION TUBE EXTENSION 960 mm Art. 35063	1
38046	GHIERA DI BLOCCAGGIO ø 32 mm BUNG ADAPTOR ø 32 mm	1
38094	ADATTATORE PER PROLUNGA ADAPTOR FOR EXTENSION	1
A925	ADATTATORE M 1/2" G x F 1/4" G ADAPTOR M 1/2" G x F 1/4" G	1
B859	PISTONE BASCULANTE PISTON	1
B860	TUBO PISTONE PISTON TUBE	1
B868	STELO POMPANTE Art. 35060 - 35061 - 35063 PUMPING ROD Art. 35060 - 35061 - 35063	1
B874	TUBO PESCANTE Art. 35060 - 35061 - 35063 SUCTION TUBE Art. 35060 - 35061 - 35063	1
B876	STELO POMPANTE Art. 35094 PUMPING ROD Art. 35094	1
B878	TUBO PESCANTE Art. 35094 SUCTION TUBE Art. 35094	1
B916	PORTATUBO A RESCA Art. 35060 HOSE HOLDER Art. 35060	1
B923	RACCORDO CONNECTOR	1
B1174	STELO POMPANTE Art. 35076 PUMPING ROD Art. 35076	1
B1175	TUBO PESCANTE Art. 35076 SUCTION TUBE Art. 35076	1
I246	ANELLO TRAVASO ARIA SLIDE VALVE RING	1
M618	ANELLO SEEGER ø 30 mm SEEGER RING ø 30 mm	1
N131	MOLLA SPRING	1
N139	MOLLA CONICA CONIC SPRING	1
P176/RAASM	CORPO POMPA PUMP BODY	1
P177	TAPPO POMPA PUMP PLUG	1

<b>Art. KR3357</b>		
<b>KIT GUARNIZIONI COMPLETO</b>		
<b>COMPOSTO DALLE GUARNIZIONI SOTTO ELENCAE</b>		
<b>JOINTS GASKETS LIST</b>		
<b>INCLUDING ALL THE GASKETS SHOWN HERE UNDER</b>		
CODICE CODE	DESCRIZIONE DESCRIPTION	Q. TÀ QTY
H040	O-RING 123 O-RING 123	1
H088	O-RING 2106 "NBR 70" O-RING 2106 "NBR 70"	1
H096	O-RING 3168 O-RING 3168	1
H312	O-RING 3118 "VITON" O-RING 3118 "VITON"	1
H385	O-RING 3100 "VITON" O-RING 3100 "VITON"	1
H413	O-RING 4150 "VITON" O-RING 4150 "VITON"	1
H444	O-RING 3193 "VITON" O-RING 3193 "VITON"	1
H486	O-RING 3093 "VITON" O-RING 3093 "VITON"	1
H522	GUARNIZIONE "VITON" GASKET "VITON"	1
H531	O-RING 4143 "VITON" O-RING 4143 "VITON"	1
H532	O-RING O-RING	1
H533	GUARNIZIONE GASKET	1
H536	O-RING 4075 "VITON" O-RING 4075 "VITON"	1
I250	PISTONE POMPANTE PUMPING PISTON	1
KG269	ANELLO DI TENUTA "TEFLON-VITON" GASKET "TEFLON-VITON"	1
O254	SILENZIATORE A PASTICCA MUFFLER	1
O258	SILENZIATORE A PASTICCA MUFFLER	1

<b>Art. KS3386</b>		
<b>SET RICAMBI CONSIGLIATI</b>		
<b>AI PUNTI VENDITA E ASSISTENZA,</b>		
<b>COMPOSTO DAI RICAMBI SOTTO ELENCAE</b>		
<b>SPARE PARTS KIT ADVISED</b>		
<b>TO THE REPAIR CENTERS. THIS KIT INCLUDES</b>		
<b>ALL THE SPARE PARTS SHOWN HERE UNDER</b>		
CODICE CODE	DESCRIZIONE DESCRIPTION	Q. TÀ QTY
KR2603	GRUPPO PISTONE MOTORE POMPANTE PUMPING MOTOR PISTON GROUP	1
KR3357	KIT GUARNIZIONI COMPLETO COMPLETE GASKETS KIT	1
N131	MOLLA SPRING	1
N139	MOLLA CONICA CONIC SPRING	1